



OCTOBER 1 - DECEMBER 31, 2024

# MADE FOR METAL

Save time and money with **new & innovative FEIN products** designed for tough challenges in metalworking.



\*All prices are suggested retail price. Actual selling price is determined by each FEIN Authorized Distributor at the time of sale. All prices and specifications are subject to change without notice.



# CG 15 SERIES

**INTRODUCING...** THE NEW FEIN CG 15 SERIES OF BRUSHLESS GRINDERS BUILT FOR SAFETY, DURABILITY & EXCEPTIONAL GRINDING PERFORMANCE.



**LIGHT BUT POWERFUL:**

Best weight/performance ratio at 4.8lbs. and 1,050 Watt output power. Significantly higher efficiency than an angle grinder with 1,700W rated input.

**SOLID METAL GEAR HEAD:**

Extremely long lasting and durable. **No plastic components.** Wear-free, adjustable safety guard.

**NEW**

**EXTREME DURABILITY**

Sealed electronic components protect the unit from damaging grinding dust. Overload protection is built in to lead to fewer breakdowns and longer tool life.



**READY FOR ANY APPLICATION:**

The infinitely variable electronic speed - ideal for a wide range of abrasives and applications.

**WORK SAFELY:**

All CG-15 grinders feature soft start, kickback and jam monitoring with a **rapid (<2 sec) motor brake** actuation. Paddle switch models also feature a lanyard eyelet for fall protection.

**NEW! ADVANCED MOTOR TECHNOLOGY:**

Completely enclosed **brushless FEIN PowerDrive motor** with optimized air flow boosts efficiency and power delivery for all applications.

5"

6"

| Model                 | CG 15-125 BL       | CG 15-125 BLP      | CG 15-150 BL       | CG 15-150 BLP      |
|-----------------------|--------------------|--------------------|--------------------|--------------------|
| Switch                | Slide              | Paddle             | Slide              | Paddle             |
| Power consumption     | Amps               | 13                 | 13                 | 13                 |
| No load speed         | rpm                | 3800-9000          | 3800-9000          | 2800-7000          |
| Grinding wheel Ø      | in[mm]             | 5(125)             | 5(125)             | 6(150)             |
| Elastic backing pad Ø | in[mm]             | 5(125)             | 5(125)             | 6(150)             |
| Mounting thread       | in/pitch           | 5/8-11             | 5/8-11             | 5/8-11             |
| Cable with plug       | ft[m]              | 13                 | 13                 | 13                 |
| Weight                | lbs[kg]            | 4.8                | 4.8                | 5.3                |
| Part number           | <b>72226760120</b> | <b>72227660120</b> | <b>72227860120</b> | <b>72227760120</b> |
| Regular Price         | \$319.95           | \$319.95           | \$319.95           | \$319.95           |
| Promo Price           | <b>\$279.95</b>    | <b>\$279.95</b>    | <b>\$279.95</b>    | <b>\$279.95</b>    |

**SAVE \$40**

**SAVE \$40**

**SAVE \$40**

**SAVE \$40**

# SHORTSLUGGER II



Optimized motor and gearbox allow for continuous operation and extreme durability

Coolant tank included for use with Slugger Cutting Fluid

Strong cutter to drill attachment for Slugger 3/4" straight shank cutters

Tilt sensor safety shutoff for better user safety and the ability to run on thinner materials



Strong permanent magnet for optimum drilling performance

| Part Number                | 72709461090           |
|----------------------------|-----------------------|
| Power Consumption          | 1,200 W               |
| Power Output               | 770 W                 |
| Load Speed: 1st gear       | 450 rpm               |
| No-Load Speed: 1st gear    | 700 rpm               |
| Carbide Cutter max. dia.   | 1-1/4 in              |
| HSS Cutter max. dia.       | 1-1/4 in              |
| Cutter max. drilling depth | 2 in                  |
| Cutter Holder              | 3/4 in straight shank |
| Stroke                     | 3-9/16 in             |
| Magnetic holding force     | 2,248 lbs             |
| Cable with plug            | 9.8 ft                |
| Weight                     | 23.81 lbs             |
| Regular Price              | \$799.95              |
| <b>Promo Price</b>         | <b>\$649.95</b>       |

**SAVE \$150**



**INCLUDES:**  
 1 Short Slugger II magnetic base drill, 1 coolant tank, 1 safety strap, 1 chip hook, 3 centering pins (1/4x3-9/16", 1/4x4", 3/16x4") 1 chip guard, 1 allen key, 1 case



# MAGFORCE 90

**ENGINEERED FOR  
HSS AND CARBIDE  
CUTTERS**



Powerful 1,150 watt brushless motor for quick cuts in tough materials

Tilt sensor safety for better user safety and ability to run on thinner material

Ratcheting handle and compact design allows the MAGFORCE 90 to work in even the tightest places



Take on any drilling application with its variable speed and forward/reverse operation



**INCLUDES:**

1 JMC MAGFORCE 90 magnetic base drill, 1 cooling lubricant hand pump, 2 centering pin 3 1/8 in (82 mm), 1 touch guard, 1 safety strap, 1 swarf hook, 1 side handle, 1 ratchet handle, 1 case

| Part Number            | 7 273 23 62 09 0         |
|------------------------|--------------------------|
| Cutter Carbide max. Ø  | 1-3/8"                   |
| Cutter HSS max. Ø      | 1-3/8"                   |
| Cutting depth max      | 1-3/8"                   |
| Twist drill max Ø      | 5/8"                     |
| Tapping max            | 1/2"                     |
| Countersinking max Ø   | 1-1/4"                   |
| Motor type             | Brushless                |
| Input power            | 1,150 W                  |
| Output power           | 800 W                    |
| Load speed             | 130 - 520 RPM            |
| Cutter holder          | 3/4 Straight Shank       |
| Stroke                 | 1-13/16"                 |
| Magnet holding force   | 2,248 lb                 |
| Magnet foot dimensions | 6-7/8 x 3-3/16 x 1-5/16" |
| Dimensions             | 6-5/8 x 11-3/8"          |
| Cable with plug        | 13'                      |
| Weight                 | 18.75 lbs                |
| Regular Price          | \$1,299.95               |
| <b>Promo Price</b>     | <b>\$1,099.95</b>        |

**SAVE  
\$200**

# MAGSPEED 150

CUT DRILLING TIMES BY 50% VS STANDARD MAG DRILLS WITH HIGH SPEED STEEL CUTTERS

Designed to drill up to **240,000** holes

NEW FEIN Brushless Motor delivers incredible drilling speeds up to 230 ft/min with consistent torque

Engineered for TCT/Coated TCT Cutters

Integrated cooling tank for use with Slugger Cutting Fluid

Tilt sensor safety shut off for better user safety and the ability to run on thinner materials



## Drill Only

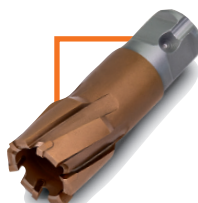
| Part Number                | 72732461090           |
|----------------------------|-----------------------|
| Power Consumption          | 1,500 W               |
| Power Output               | 1,500 W               |
| Load Speed: 1st gear       | 620 rpm               |
| No-Load Speed: 1st gear    | 620 rpm               |
| Carbide Cutter max. dia.   | 1-1/2 in              |
| HSS Cutter max. dia.       | 13/16 in              |
| Cutter max. drilling depth | 2 in                  |
| Cutter Holder              | 3/4 in straight shank |
| Stroke                     | 4-3/16 in             |
| Magnetic holding force     | 2,248 lbs             |
| Cable with plug            | 13 ft                 |
| Weight                     | 24.25 lbs             |
| Regular Price              | \$1,199.95            |
| <b>Promo Price</b>         | <b>\$999.95</b>       |

**SAVE \$200**

## Drill & Cutter Kit

| Part Number        | 72732462090   |
|--------------------|---|
| Kit Includes       | 1 chip hook, 1 coolant tank, 1 centering pin 3/16" x 4", 1 centering pin 1/4" x 3-9/16", 1 centering pin 1/4" x 4", 1 safety strap, 1 allen key, 1 chip guard 1 hexagonal socket key with T-grip, 1 case and TCT Cutter Set |
| Regular Price      | \$1,399.95  |
| <b>Promo Price</b> | <b>\$1,199.95</b>   |

**SAVE \$200**



**FOR BEST RESULTS USE FEIN'S NEW COATED CARBIDE CUTTERS**

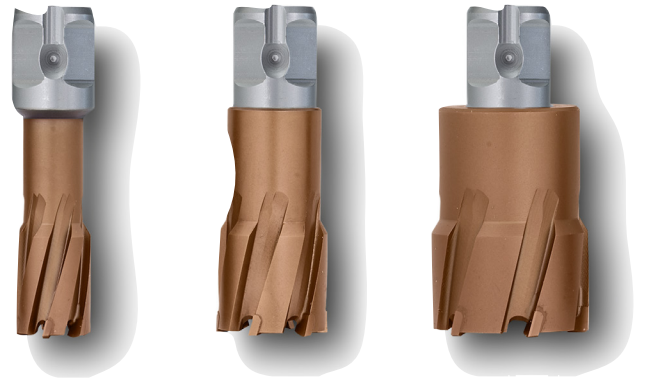


**NEW**

# COATED CARBIDE CUTTERS

## FEIN ULTRA TCT CUTTERS

- + Extends cutting life vs. HSS Cutters 2.5x
- + Reduces heat
- + Boosts drilling performance in hard to cut materials
  - Stainless Steel
  - AR Steel
  - Exotics
- + Maximizes drilling speed in mild steel



| Part Number | Diameter |
|-------------|----------|
| 63127839003 | 9/16     |
| 63127839004 | 5/8      |
| 63127839006 | 11/16    |
| 63127839007 | 3/4      |
| 63127839009 | 13/16    |
| 63127839010 | 7/8      |
| 63127839011 | 15/16    |
| 63127839012 | 1        |

**SAVE  
25%**

| Part Number | Diameter |
|-------------|----------|
| 63127839013 | 1-1/16   |
| 63127839016 | 1-1/8    |
| 63127839017 | 1-3/16   |
| 63127839018 | 1-1/4    |
| 63127839019 | 1-5/16   |
| 63127839021 | 1-3/8    |
| 63127839022 | 1-7/16   |
| 63127839023 | 1-1/2    |

# VERSAMAG

BOOST OVERALL SHOP PRODUCTIVITY BY USING THE NEW FEIN VERSAMAG TO CLAMP WORKPIECES QUICKLY AND SECURELY!

All Metal Construction:  
Multi-function jaw  
quickly grips  
workpieces safely

Easy and Intuitive:  
No tools needed for set up

Permanent magnet  
has 2 settings: 30%  
holding strength  
allows the user to  
easily position the  
vise. Once in  
position, lock it  
in at 100%



**NEW**

1750 lbf holding force for  
clamping on all magnetic  
surfaces - even thin sheet  
metals from 3/16"

**\$449.95**