



AKBU 35 PMQ AS

Cordless universal magnetic core drill for up to 35 mm

Small and powerful single-speed cordless universal magnetic core drill with forward/reverse running, MT2 tool mounting, permanent magnet and maximum functionality for mobile working on the construction site.

Product number: 7 170 03 61 00 0

Details

- + Extremely wear-resistant and durable tool concept thanks to brushless motor as well as high material quality and workmanship. Designed for up to 60,000 holes during a 300 h usage period.
- + Small and light tool with increased work progress of up to 25%, offering unique productivity and battery life compared with the competition. Using 18 V 12 Ah AMPShare ProCORE batteries, up to 48 holes can be drilled per battery charge (carbide core drill bit, diameter 18 mm, S235 12 mm).
- + Weighing 12.2 kg, it's the lightest cordless universal core drill in the world. Maximum flexibility for all mobile drilling work, such as core drilling, twist drilling, tapping, countersinking and reaming thanks to forward/reverse running, electronic speed setting and a 260 mm stroke range.
- + Intuitive operating concept avoids mix-ups and can be clearly seen by the user.
- + Convenient magnetic holding force display helps the user to reliably position the tool.
- + Tilt sensor stops the drill motor when the tool slips or tilts.
- + MT2 tool mounting for direct use of industrial tools.
- + Secure positioning thanks to extra narrow permanent magnet with magnetic bias for convenient and simple alignment.
- + Speed saving "memory function".
- + Compatible with Bosch Professional 18 V batteries (available since 2008) and AMPShare batteries.
- + COOLPACK 2.0 technology delivers a 135% longer battery life and therefore makes longer operating times possible.
- + State-of-the-art cell technology and intelligent battery management deliver 87% more power than with conventional batteries.
- + ProCORE Li-Ion battery with high-power cells, charge status indicator and "Electronic Cell Protection" (ECP). ECP protects against overload, overheating and total discharge.
- + * Also available with accessories.
- + ** Outstanding performance with AMPShare ProCore 18 V 8.0 Ah / 12.0 Ah

Price includes

- + 1 cordless magnetic core drill
- + 1 lashing strap
- + 1 centring pin 100 mm
- + 1 drift key
- + 1 x coolant pump
- + 1 swarf hook
- + 1 contact guard
- + 1 plastic carrying case

Product feature

- + Magnetic holding force display
- + Variable speed control
- + Speed-controlled electronics (tacho)
- + Reversible rotation
- + Memory function
- + Tilt sensor

Application



Core drilling in metal with a Ø up to 35 mm

++

Twist drills with drill chuck (DIN 338)

+

Twist drills with MK fitting (DIN 345)

++

Tapping

++

Countersinking

++

Reaming

++

Working overhead

++

Installation work

++

Workshop jobs

++

+ suitable

++ well suitable

Technical data

TECHNICAL DATA

Battery voltage

18 V

Battery compatibility

Li-ion / ProCORE Li-ion**

Battery interface

18 V AMPShare

Motor

brushless

Speed, full load

130 - 520 rpm

Tool Holder

MT 2

Carbide core drill bit max. Ø

35 mm

HSS core drill max. Ø

35 mm

VIBRATION AND SOUND EMISSION VALUES

Sound pressure level LpA
Uncertainty of measured value
KpA

82,4 dB
3 dB

Sound power level LWA
Uncertainty of measured value
KWA

93,4 dB
3 dB

Sound peak value
LpCpeak
Uncertainty of measured value
KpCpeak

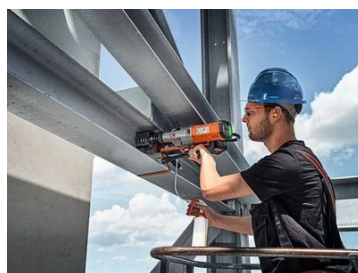
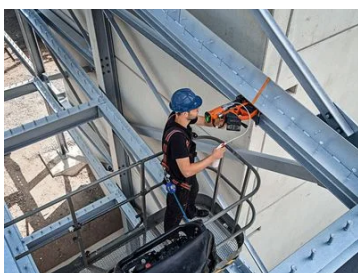
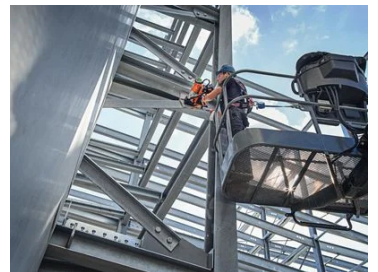
97,1 dB
3 dB

Vibration value 1 α_{hv} 3-way
Uncertainty of measured value
K α

$\alpha_{h,D}$ 0,6 m/s²
1,5 m/s²

Core drill, drilling depth max.	50(75)* mm
Twist drill max. Ø	18 mm
Tapping	M 14
Countersinking max. Ø	30 mm
Reaming max. Ø	18 mm
Core drill holder	QuickIN
Changing the core bit	tool-free
Stroke	135 mm
Total stroke range	260 mm
Magnetic holding power	9,000 N
Magnetic foot dimensions	195 x 70 mm
Weight without storage battery	12.20 kg

Application examples



Powered by  **BOSCH**

**Kompatibel mit
AMPSHare- / Bosch
Professional 18 V
Akkus.** | Compatible
with AMPSHare/Bosch

Professional 18 V batteries. | Compatible avec
les batteries 18 V AMPSHare/Bosch Professional. |
Compatible con baterías AMPSHare/Bosch
Professional de 18 V. | Compatible con le batterie
AMPSHare / Bosch Professional da 18 V.