

KBE 32

Eco magnetic core drill for up to 32 mm

Compact and precise single-speed Endurance magnetic core drill with basic functionality for core drilling in the workshop and on the construction site.

Product number: 7 270 94 61 24 0



Details

- + For tough use thanks to the outstanding quality of workmanship and the internal motor cable guide.
- + Extremely durable gearbox design offering an operating time of up to 400 hours for an uncompromising service life.
- + Lightweight with FEIN high-power motor and high torque for all core drilling tasks
- + Excellent price / performance ratio.
- + Internal cooling.
- + High magnetic holding force.
- + Feed handwheel can be moved from one side to the other.
- + Good accessibility in cramped operating situations.
- + Personal safety switch.

Price includes

- + 1 hand pump
- + 1 lashing strap
- + 1 contact guard
- + 1 case
- + 1 bottle holder
- + 1 centring pin 100 mm
- + 1 socket head wrench 5 mm

Product feature

- + Feed handwheel can be moved from one side to the other

Application

Core drilling in metal with a Ø up to 35 mm

Working overhead





FEIN

Installation work

++

Workshop jobs

++

+ suitable

++ well suitable

Technical data

TECHNICAL DATA

Input

1,200 W

Output

770 W

Speed, full load

450 rpm

Speed, no load

700 rpm

Carbide core drill bit max. Ø

32 mm

HSS core drill max. Ø

32 mm

Core drill, drilling depth max.

50 mm

Core drill holder

3/4 in Weldon

Stroke

90 mm

Magnetic holding power

10,000 N

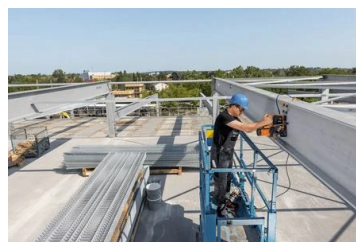
Cable with plug

3 m

Weight according to EPTA

10.80 kg

Application examples





FEIN

