



JMU 137 QW

Universal magnetic core drill up to 1-3/8 in [35 mm]

Small, long-stroke, single-speed universal magnetic core drill with forward / reverse rotation and maximum functionality for flexible work on the construction site.

Product number: 7 270 54 61 12 0

Details

- + Extremely wear-resistant tool concept with swivel-mounted motor cable protection hose for tough conditions in industry and skilled trades.
- + Perfect power-to-weight ratio, thanks to compact, weight-optimized design and FEIN 1 100 W high-performance motor with tacho electronics for high speed stability for reliable and efficient operation.
- + Right/left rotation, electronic speed adjustment and 10-1/4 [260] in[mm] stroke range enable universal work applications such as core drilling, spiral drilling, tapping as well as countersinking and reaming.
- + Small and lightweight.
- + Simple and error-proof control concept in the operator's field of view.
- + A Convenient magnetic holding force indicator supports the safe positioning of the tool.
- + High magnetic holding force.
- + Motion sensor.
- + Additional magnet switch in the drill stand.
- + Integrated coolant tank ensures high core drill tool life.
- + Hand feed wheel can be mounted on either side.
- + "Memory function" speed storage.

Price includes

- + 1 coolant tank
- + 1 chip hook
- + 1 chip guard
- + 1 safety strap
- + 1 pilot pin
- + 1 case

Product feature

- + Magnet holding force display
- + Electronic speed setting
- + Speed-controlled tacho electronics
- + Forward/reverse operation
- + Memory function
- + Tilt sensor

Application



Mag base drilling metal up to 1-1/2" dia.

++

Twist drilling with drill chuck

+

Tapping

++

Countersinking

++

Reaming

++

Performing overhead work

++

Installation work

++

Workshop jobs

++

+ suitable

++ well suitable

Technical data

TECHNICAL DATA

Power consumption

1,100 W

Power output

550 W

Full load speed

130 - 520

Carbide cutter max. dia.

1-3/8 [35] in[mm]

HSS cutter max. dia.

1-3/8 [35] in[mm]

Cutter max. drilling depth

2 [50] in[mm]

Twist drill max. dia.

5/8 [16] in[mm]

Tapping

1/2"

Max. countersinking dia.

1-1/4 [31] in[mm]

VIBRATION AND SOUND EMISSION VALUES

Sound pressure level LpA

82,3 dB

Measurement uncertainty of the measured value KpA

5 dB

Sound power level LWA

93,3 dB

Measurement uncertainty of the measured value KWA

5 dB

Peak sound value

95,9 dB

LpCpeak

Measurement uncertainty of the measured value KpCpeak

5 dB

Vibration value 1 α_{hv} 3-

way

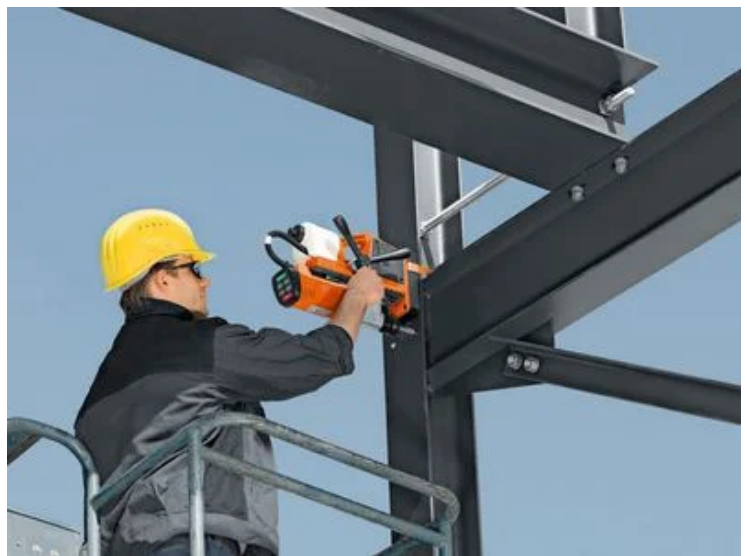
Measurement uncertainty of the measured value K α

$\alpha_{h,D} < 2,5 \text{ m/s}^2$

1,5 m/s²

Reaming max. dia.	5/8 [16] in[mm]
Cutter holder	3/4" straight shank
Cutter change	tool-free
Stroke	5-5/16 [135] in[mm]
Total stroke range	10-1/4 [260] in[mm]
Magnetic holding force	2248 [10,000] lbs[N]
Cable with plug	13.1 [4] ft[m]
Weight	23.59 [10.70] lbs[kg]
Weight	23.59 lbs

Application examples





FEIN

